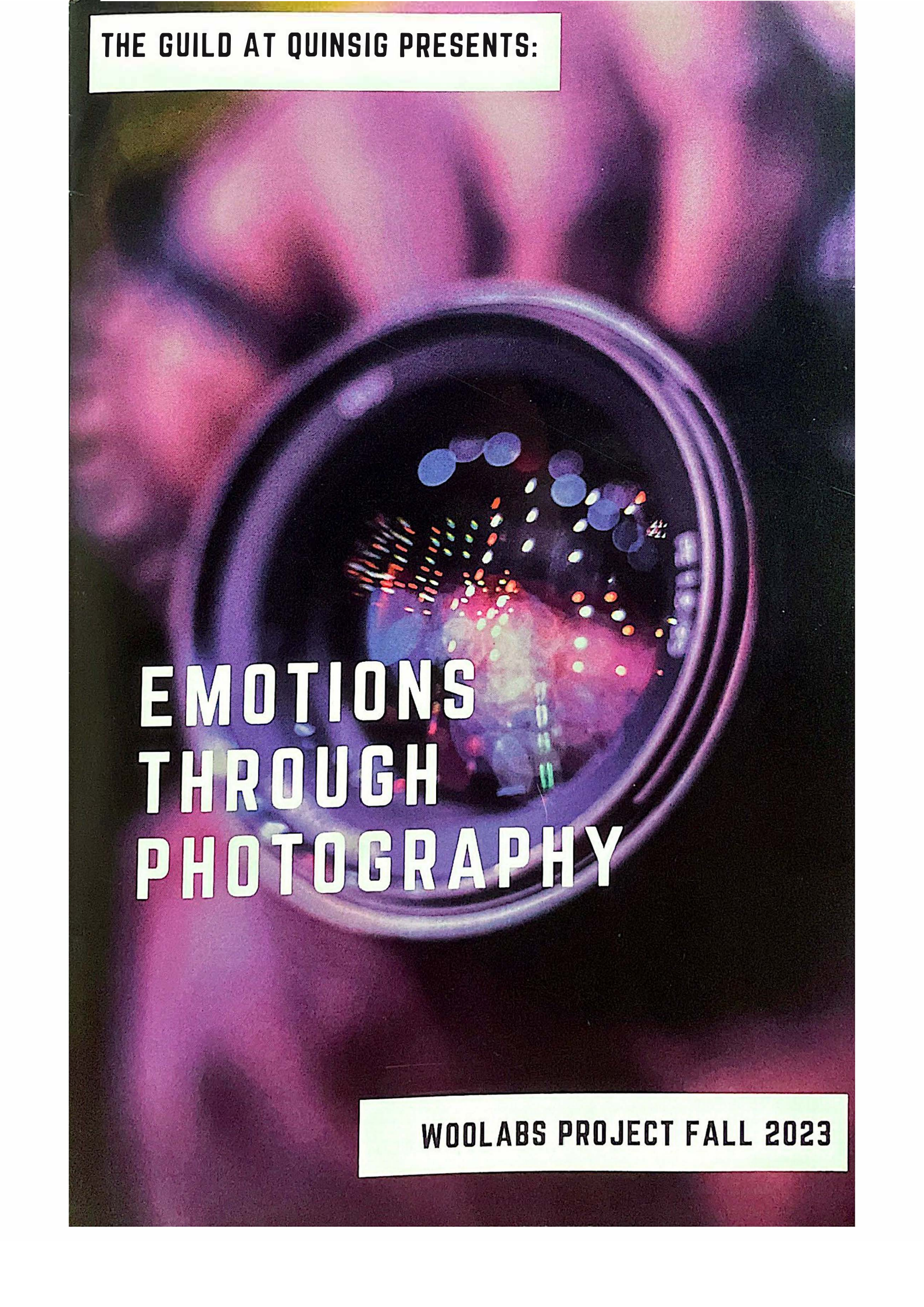


THE GUILD AT QUINSIG PRESENTS:

A close-up photograph of a camera lens, showing the internal elements and the lens mount. The lens is set against a dark background filled with out-of-focus, colorful lights in shades of purple, blue, and red, creating a bokeh effect. The lens itself is in sharp focus, with the light reflecting off its glass surfaces.

**EMOTIONS
THROUGH
PHOTOGRAPHY**

WOOLABS PROJECT FALL 2023

TRAPPED:



The hands in the photo looks like they are stuck/trapped in an invisible wall. If you look down there's a door but it looks like it's locked or it's unable for you to open.

K A Y L A N I , S O F I A , J A Y L A

ODD ONE OUT:



The little pencil isn't as sharp like the other guys and he's much shorter than everyone else, making him the odd one out. On the bright side he stands out and is different from everyone else.

A R I E L , E T H A N , W I L B E R T O

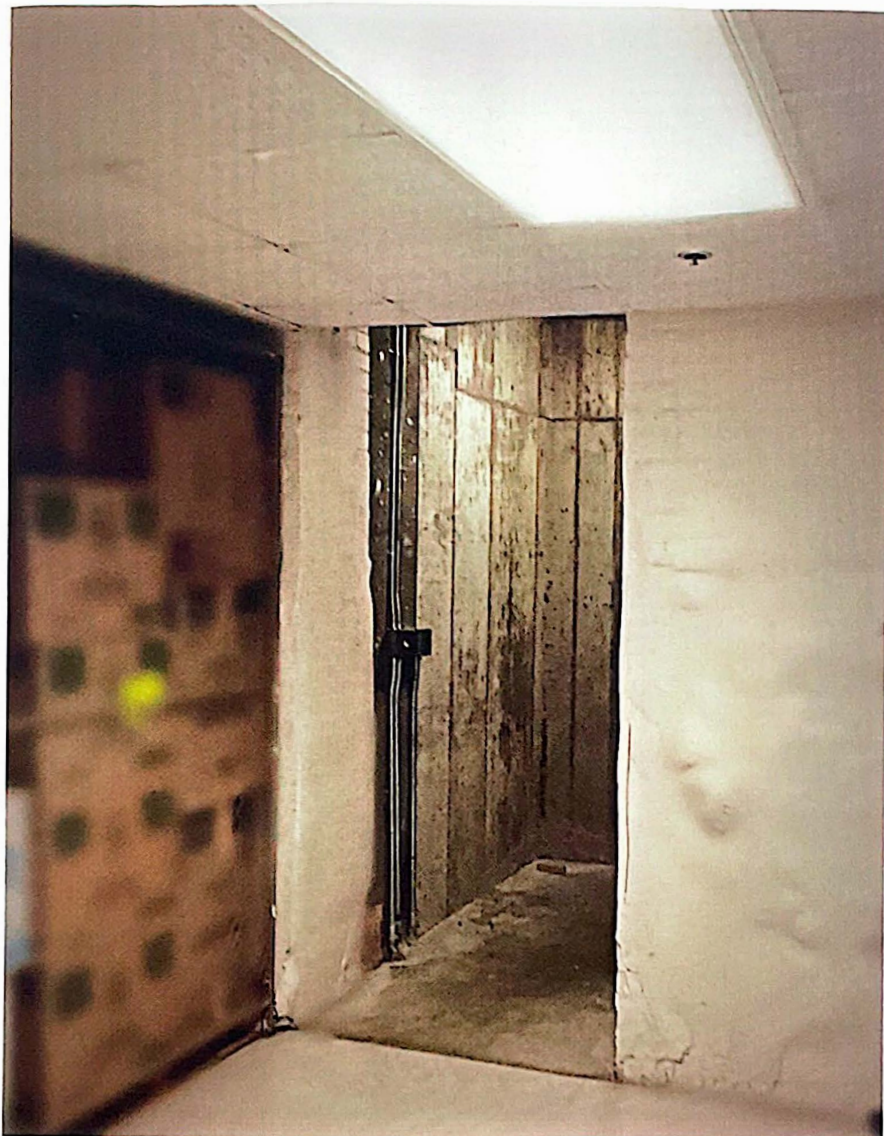
INSIDE MY HEAD:



The emotion we wanted to show was disgusted and messiness. The reason we named this photo inside my head was because when we go to math class, my emotions start going all over the place and it starts to get messy and crazy.

A R M A N I , J A Y D E N B . ,
— D A N I E L —

THE WAY:



The emotion we wanted to show in this photo was fear. It reminded us of a nightmare we had and it looks like the scene it took place in and there was someone waiting for you on the other side.

K A T T Y , T I A N N A , A L E N N Y ,
M A R I A N G E L L E S E

STAIRS TO RAINBOW LAND:



This photo is called "The stairs to rainbow land". It displays the emotion of happiness and some sadness because of the blue. It portrays the day when I got my Xbox and also the day when it broke.

L A Y L A , K A T Z Y E L L , J A S O N

HOT:



This picture makes us feel like we're in a hot room. The photo shows hot because it looks like the rock has been taken right out of lava.

Z A V I E Y E N & A V A

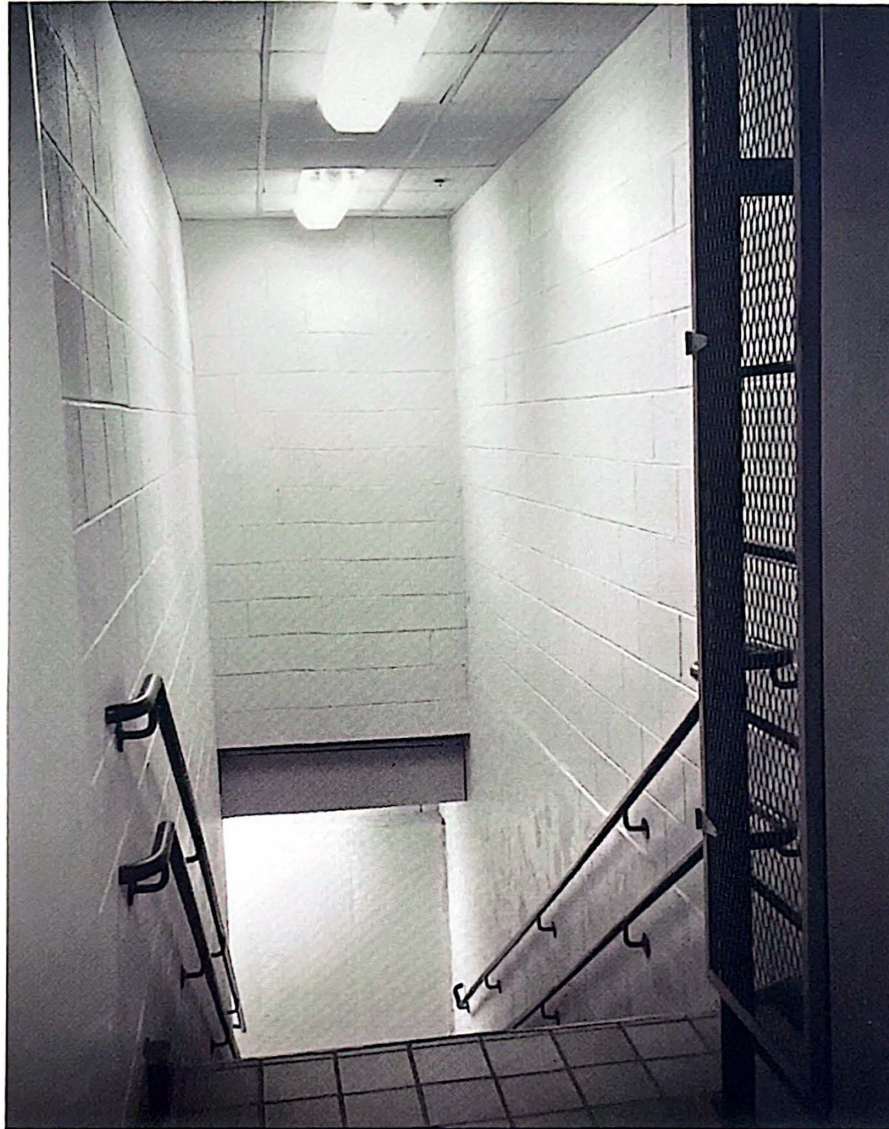
PUZZLED:



Confused because the closer you get, the smaller it becomes and the further you get, the bigger it becomes

J A S O N P , A L A I N A , J A Y D E N
M . , M Y A

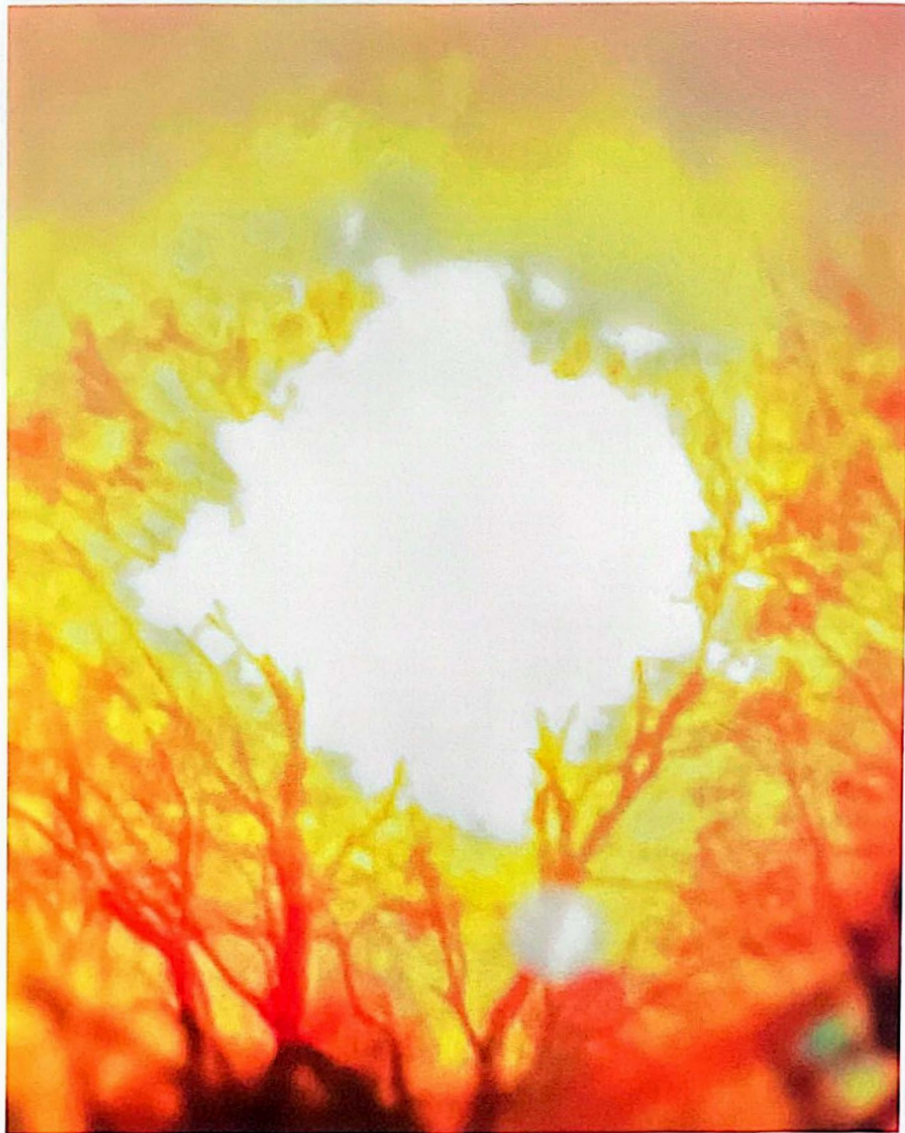
SCARY:



You cant tell where the stairs are going to take you and they get darker the farther you look down. Another reason why this photo shows scary is because next to the stairs, there is a ladder that is locked up and you also don't know where it leads to.

K A Y L A N I , S O F I A , J A Y L A

HAPPINESS:



The warm colors yellow, orange, red, and white make you feel happy and a warm embrace. The sun shining through the trees have a calming affect

A R I E L , E T H A N , W I L B E R T O

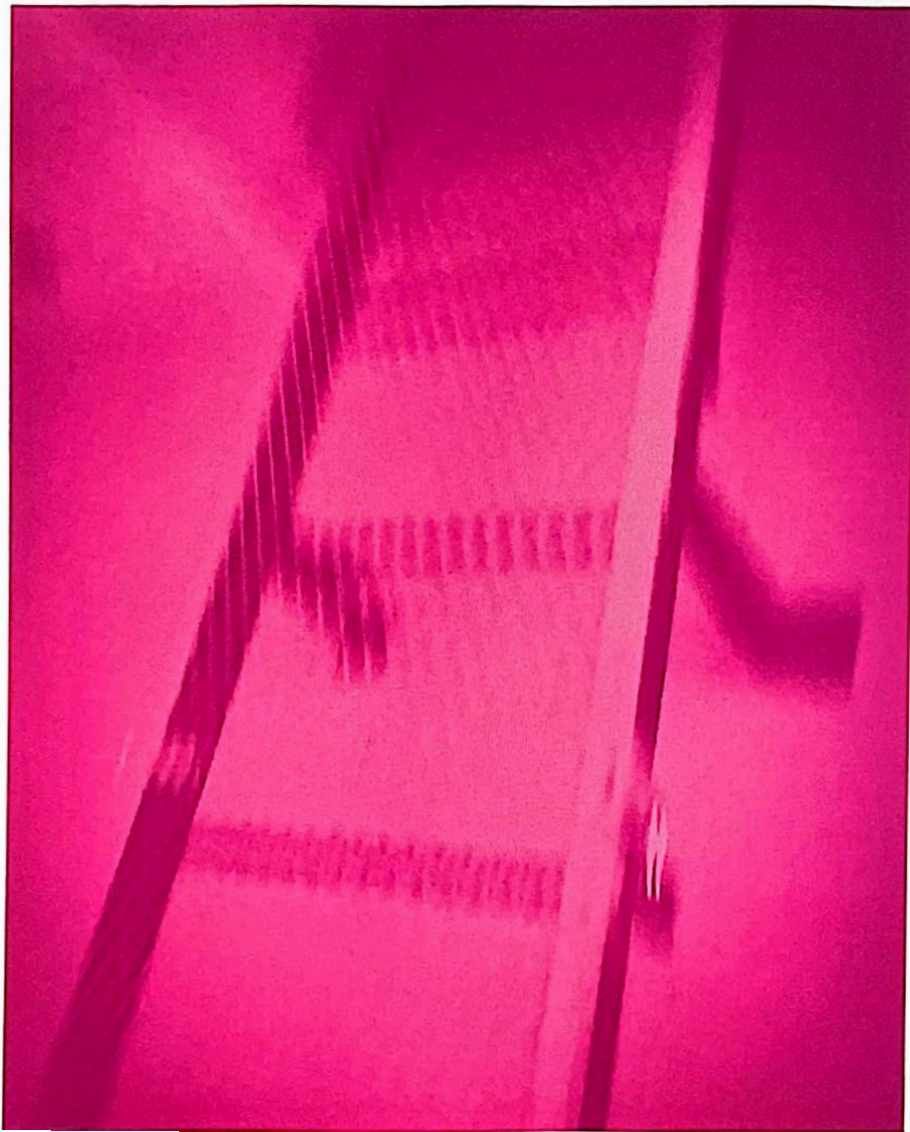
DREAM:



This photo shows the emotion madness and emptiness. The shadow in this photo shows the emotion being scared. The purpose of this photo was to show how it looks in a dream

A R M A N I , J A Y D E N B . ,
D A N I E L

PINK WORLD:



This photo is called pink world. This photo makes me feel happiness because my favorite color is pink and its the stairs to my happy place.

L A Y L A , K A T Z Y E L L , J A S O N
F .

SCARED:



Imagine you've been knocked out and this is the first thing you see. You wake up in a dark abandoned school hallway confused with how you got there and what to do.

Z A V I E Y E N & A V A



HOLE OF DARKNESS:



The picture is dark and scary and looks like it goes on forever. It looks like a black hole. It's the fear of the unknown hiding behind it

J A S O N P . A L A I N A , J A Y D E N
M , M Y A




THE BRIGHT SIDE:



The emotion we wanted to show was comfort. Looking at this beautiful wall can make us happy. It can brighten our day when we're sad and even on your sad day make you feel joy. it can make you feel however you want to feel.

K A T T Y , T I A N N A , A L E N N Y ,
M A R I A N G E L L E S E



GUILD OF ST. AGNES

EARLY EDUCATION & CARE
Since 1913